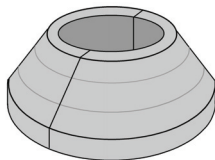


## Moso® Radiator pipe rosette

### Product

With the MOSO bamboo rosette the radiator pipes can be finished in an elegant way. The rosette consists of 2 parts, connected by means of a dowel.



### Product line

| Code Natural | Code Caramel | Hole diameter | Finish | Dimensions (mm) |
|--------------|--------------|---------------|--------|-----------------|
| BR100-16     | BR150-16     | 16mm          | L      | 50x50x18        |
| BR100-22     | BR150-22     | 22mm          | L      | 55x55x20        |

L = Lacquer

## Moso® Stair nosing

### Product

In order to continue the MOSO floor onto a staircase, MOSO Stair nosing can be used to upholster the stair treads. The stair nosing is available in 10 mm (for 2-ply flooring), 13mm (for Density wide board) or 15mm (for 15mm solid floors), both in unfinished and pre finished.



### Product line

| Code Natural | Code Caramel | Style | Thickness | Finish | Dimensions (mm) |
|--------------|--------------|-------|-----------|--------|-----------------|
| BN-PP300     | BN-PP350     | PP    | 15mm      | -      | 2000x55x15/20   |
| BN-PP310     | BN-PP360     | PP    | 10mm      | -      | 2000x50x10/15   |
| BN-SP300     | BN-SP350     | SP    | 15mm      | -      | 2000x55x15/20   |
| BN-SP310     | BN-SP360     | SP    | 10mm      | -      | 2000x50x10/15   |
| BN-PP309     | BN-PP359     | PP    | 15mm      | L      | 2000x55x15/20   |
| BN-PP319     | BN-PP369     | PP    | 10mm      | L      | 2000x50x10/15   |
| BN-SP309     | BN-SP359     | SP    | 15mm      | L      | 2000x55x15/20   |
| BN-SP319     | BN-SP369     | SP    | 10mm      | L      | 2000x50x10/15   |
| BN-DT519     | BN-DT569     | DT    | 13mm      | L      | 1830x55x13/18   |

PP = plain pressed  
 SP = side pressed  
 DT = density  
 L = Lacquer Bona 80 gr/m2